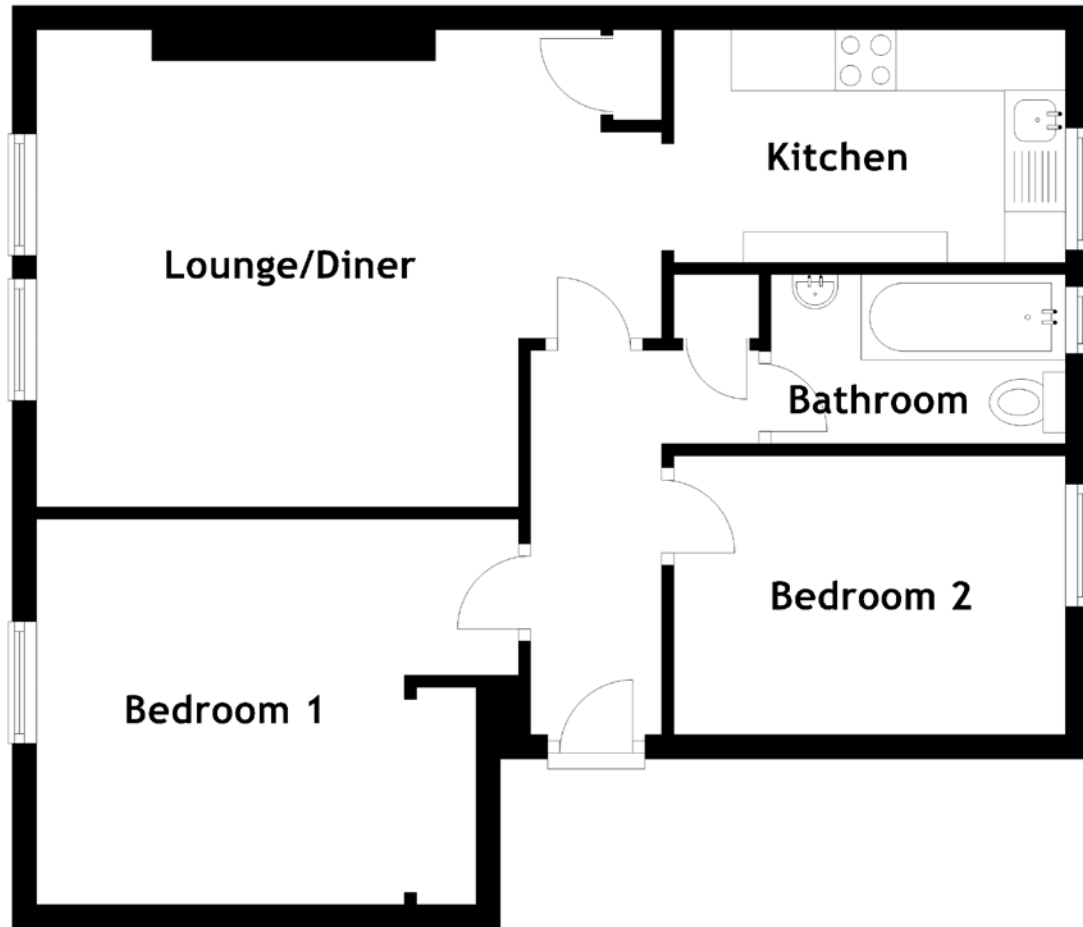


FLOOR PLAN, DIMENSIONS & MAP



Approximate Dimensions (Taken from the widest point)

Lounge/Diner
Kitchen
Bathroom
Bedroom 1
Bedroom 2

5.14m (16'10") x 3.92m (12'10")
3.22m (10'7") x 1.91m (6'3")
2.42m (7'11") x 1.39m (4'7")
3.96m (13') x 3.17m (10'5")
3.21m (10'6") x 2.29m (7'6")

Gross internal floor area (m²): 56m²
EPC Rating: C

Extras: All white goods included, wooden shelving may be available by separate negotiation.

