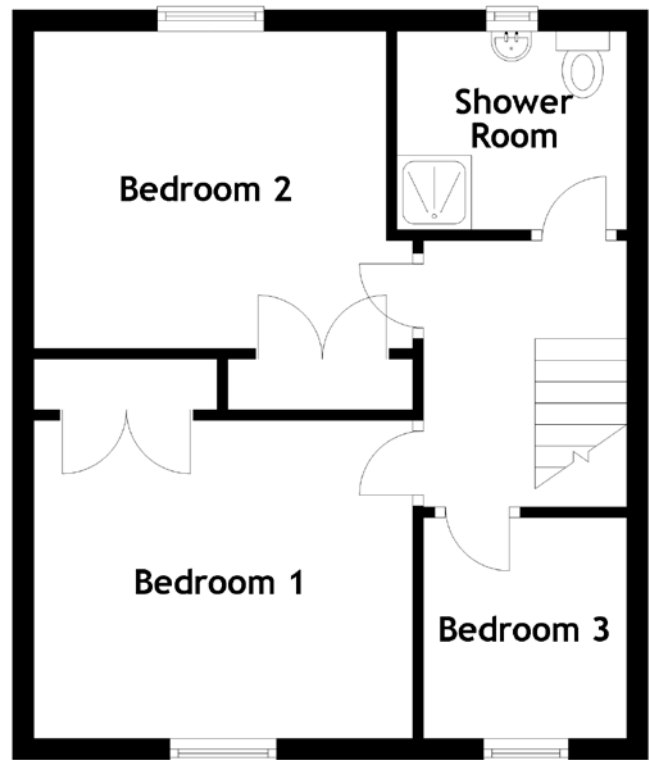
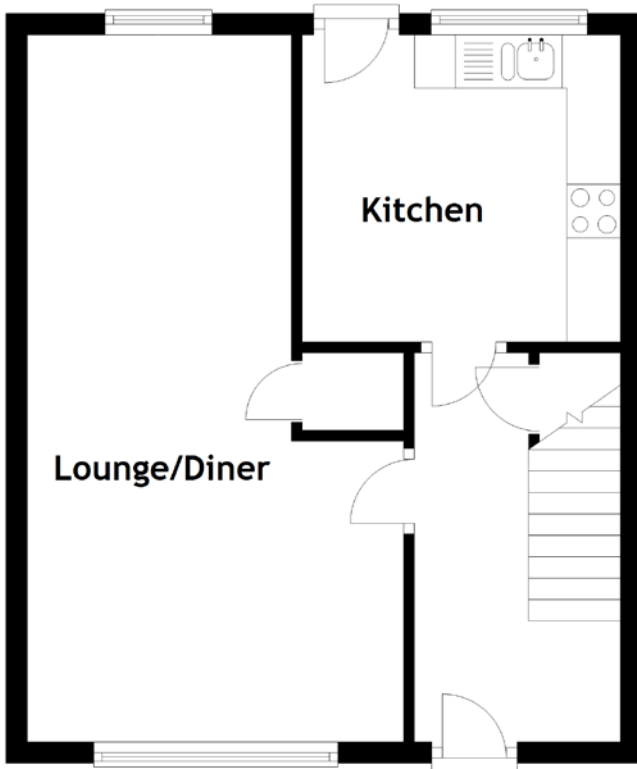


FLOOR PLAN, DIMENSIONS & MAP



Approximate Dimensions
(Taken from the widest point)

Lounge/Diner 6.63m (21'9") x 2.48m (8'2")
 Kitchen 2.98m (9'9") x 2.88m (9'5")
 Shower Room 2.10m (6'11") x 1.86m (6'1")

Bedroom 1 3.55m (11'8") x 2.98m (9'9")
 Bedroom 2 3.55m (11'8") x 2.97m (9'9")
 Bedroom 3 2.07m (6'10") x 1.94m (6'4")

Gross internal floor area (m²): 71m²
 EPC Rating: C

