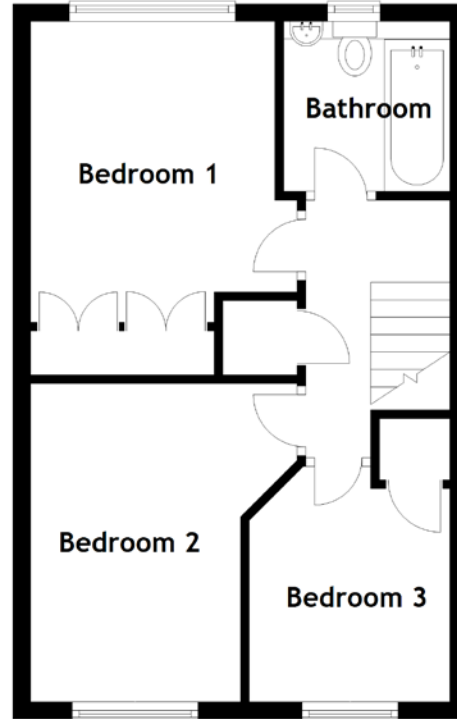
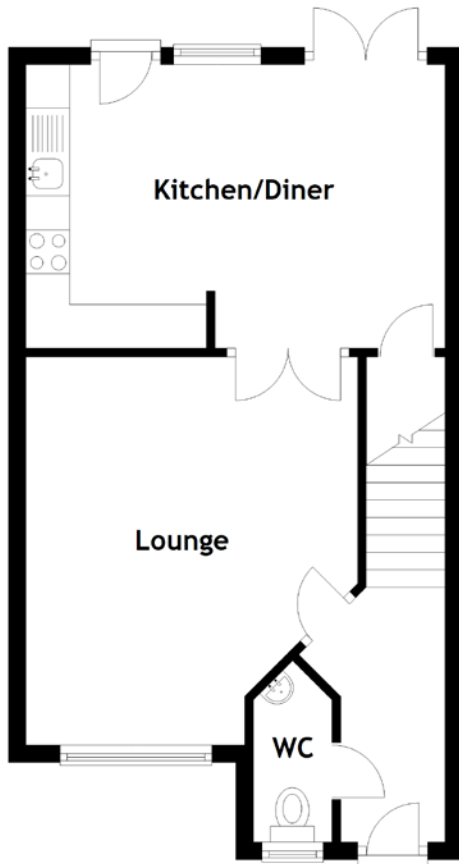


FLOOR PLAN, DIMENSIONS & MAP



Approximate Dimensions (Taken from the widest point)

Lounge	4.45m (14'7") x 3.80m (12'6")
Kitchen/Diner	4.80m (15'9") x 3.25m (10'8")
WC	1.95m (6'5") x 0.90m (2'11")
Bathroom	1.95m (6'5") x 1.90m (6'3")
Bedroom 1	3.45m (11'4") x 2.95m (9'8")

Bedroom 2	3.65m (12') x 2.95m (9'8")
Bedroom 3	2.70m (8'10") x 2.25m (7'5")

Gross internal floor area (m²): 78m² | EPC Rating: C

Extras: Freestanding appliances and furniture may be available by separate negotiation.

