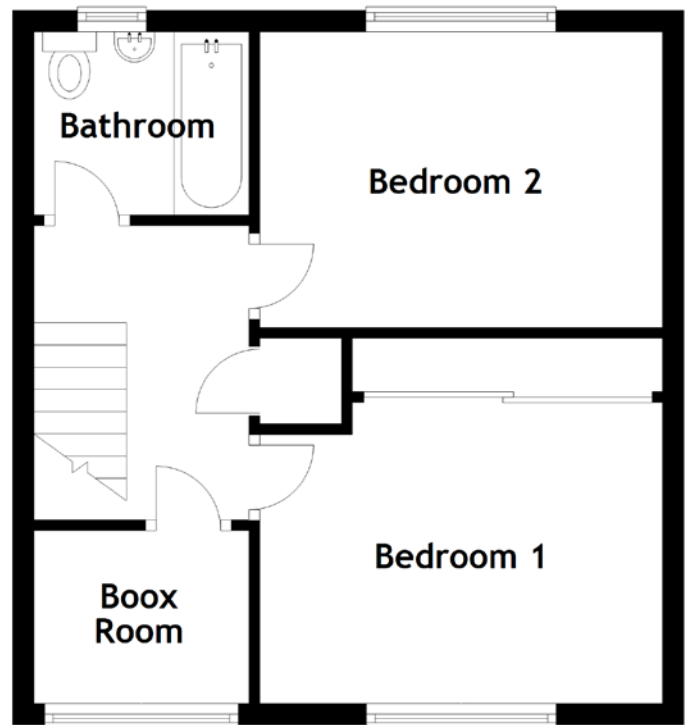
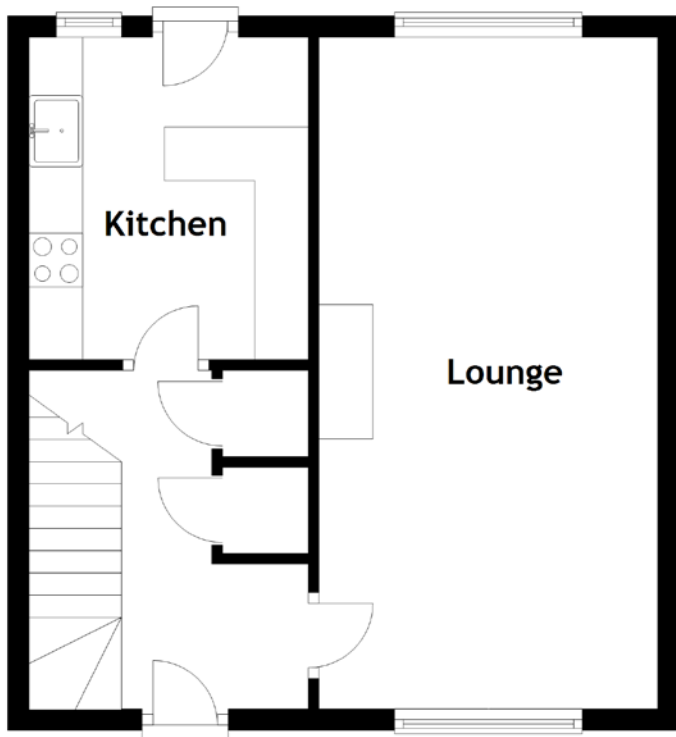


FLOOR PLAN, DIMENSIONS & MAP



Approximate Dimensions (Taken from the widest point)

Lounge	6.25m (20'6") x 3.15m (10'4")
Kitchen	3.00m (9'10") x 2.60m (8'6")
Bathroom	2.00m (6'7") x 1.70m (5'7")
Bedroom 1	3.75m (12'4") x 2.80m (9'2")
Bedroom 2	3.80m (12'6") x 2.75m (9')
Boox Room	2.00m (6'7") x 1.61m (5'3")

Gross internal floor area (m²): 72m²

EPC Rating: D

Extras: Floor coverings, light fittings, blinds and window dressings.

