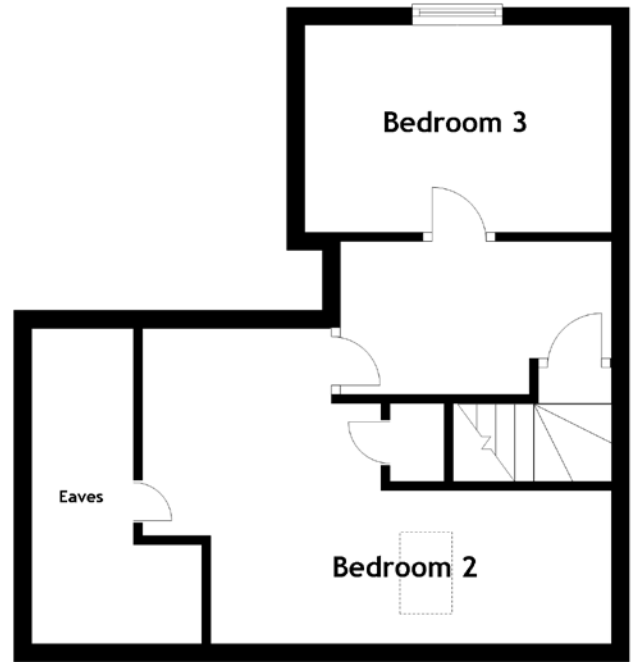
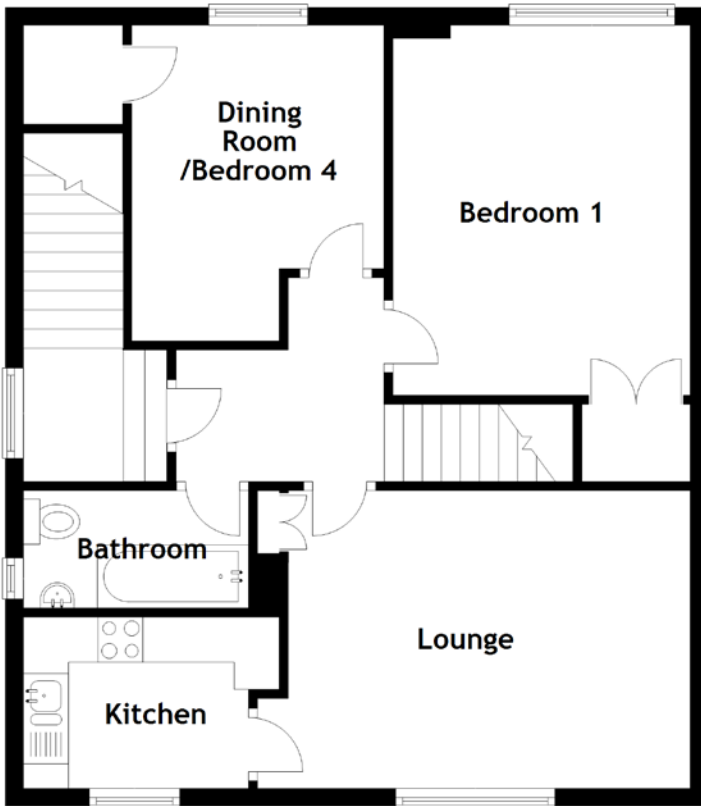


FLOOR PLAN, DIMENSIONS & MAP



Approximate Dimensions (Taken from the widest point)

Lounge	4.80m (15'9") x 3.30m (10'10")
Kitchen	2.50m (8'2") x 1.90m (6'3")
Dining Room / Bedroom 4	3.50m (11'6") x 2.80m (9'2")
Bathroom	2.50m (8'2") x 1.30m (4'3")

Bedroom 1	4.10m (13'5") x 3.30m (10'10")
Bedroom 2	5.20m (17'1") x 3.50m (11'6")
Bedroom 3	3.40m (11'2") x 2.30m (7'6")

Gross internal floor area (m²): 89m²
EPC Rating: D

