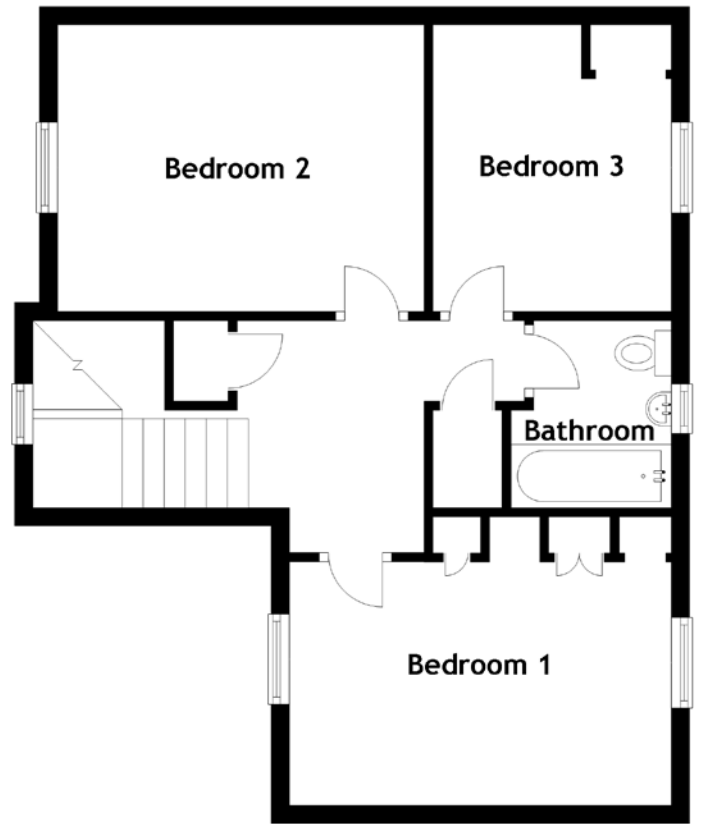
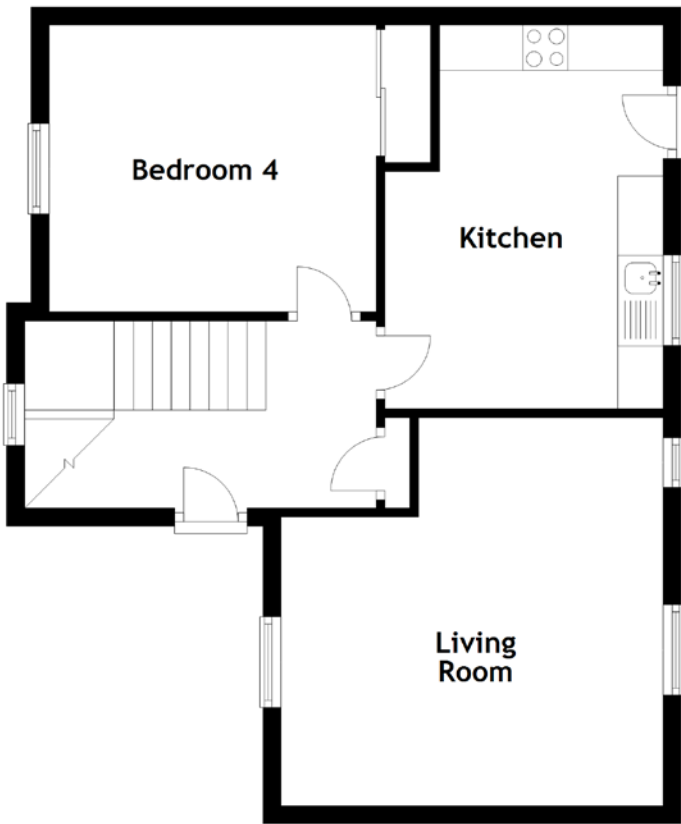


FLOOR PLAN, DIMENSIONS & MAP



Approximate Dimensions (Taken from the widest point)

Living Room	4.29m (14'1") x 4.22m (13'10")
Kitchen	4.24m (13'11") x 3.07m (10'1")
Bedroom 4	3.61m (11'10") x 3.17m (10'5")
Bathroom	2.07m (6'9") x 1.77m (5'10")

Bedroom 1	4.22m (13'10") x 3.22m (10'7")
Bedroom 2	4.05m (13'3") x 3.17m (10'5")
Bedroom 3	3.17m (10'5") x 2.69m (8'10")

Gross internal floor area (m²): 106m²
EPC Rating: E

