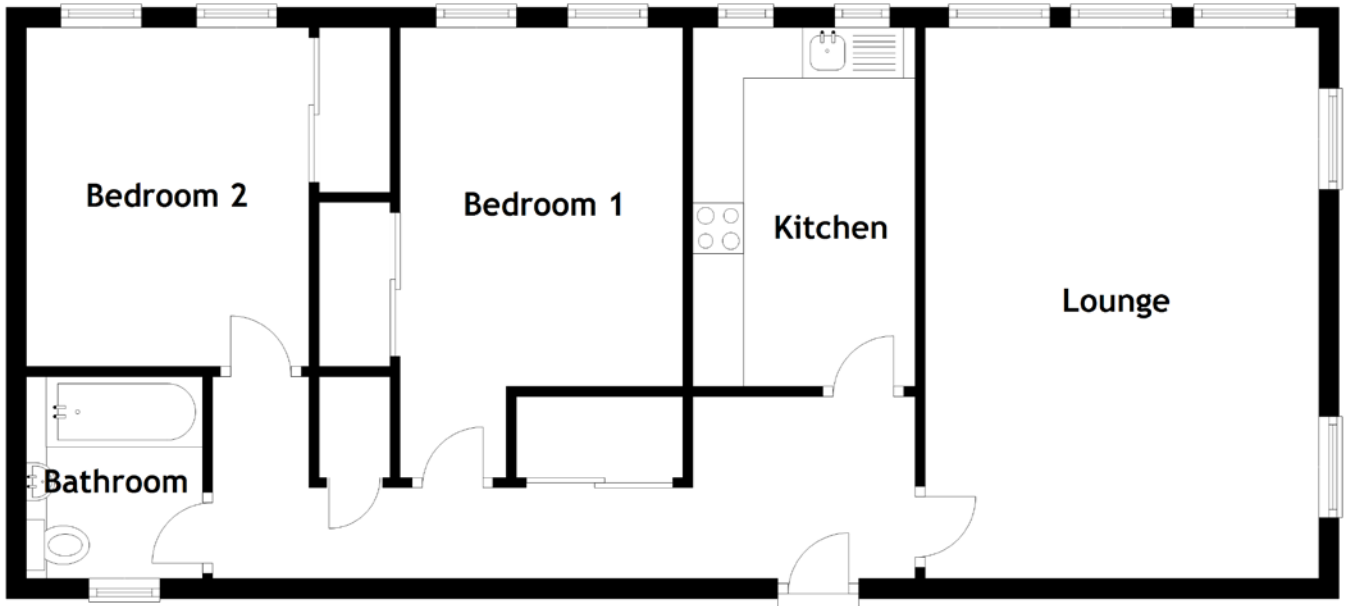


FLOOR PLAN, DIMENSIONS & MAP



Approximate Dimensions (Taken from the widest point)

Lounge	5.45m (17'11") x 3.90m (12'10")
Kitchen	3.55m (11'8") x 2.20m (7'3")
Bathroom	2.00m (6'7") x 1.75m (5'9")
Bedroom 1	4.45m (14'7") x 2.80m (9'2")
Bedroom 2	3.40m (11'2") x 2.80m (9'2")

Gross internal floor area (m²): 70m²
EPC Rating: D

Extras: Carpets and floor coverings, light fixtures and fittings, curtains and blinds.

