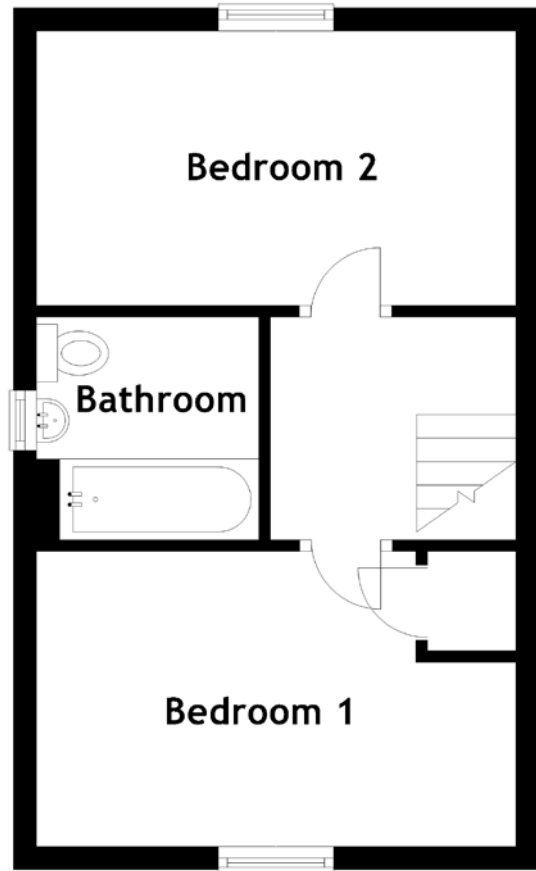
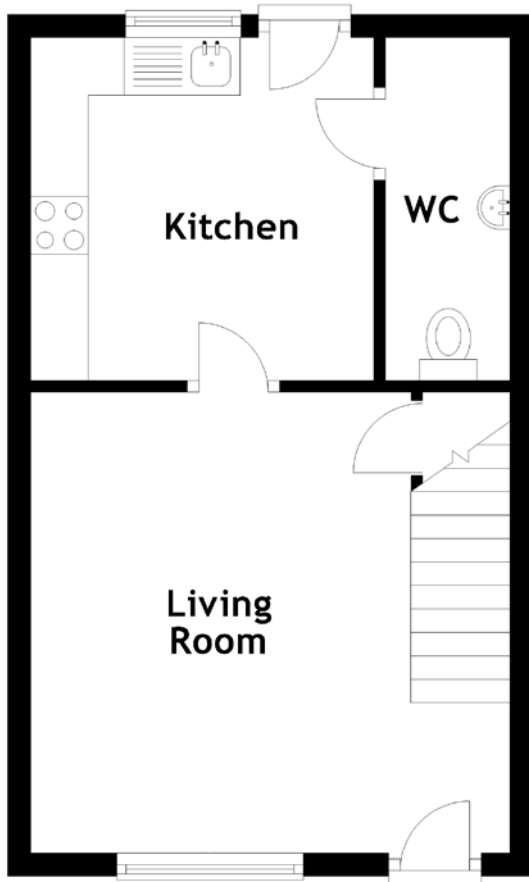


FLOOR PLAN, DIMENSIONS & MAP



Approximate Dimensions
(Taken from the widest point)

Living Room	4.15m (13'7") x 3.99m (13'1")
Kitchen	2.97m (9'9") x 2.97m (9'9")
WC	2.97m (9'9") x 1.08m (3'7")

Bedroom 1	4.15m (13'7") x 2.56m (8'5")
Bedroom 2	4.15m (13'7") x 2.22m (7'3")
Bathroom	1.93m (6'4") x 1.93m (6'4")

Gross internal floor area (m²): 57m²
EPC Rating: C

