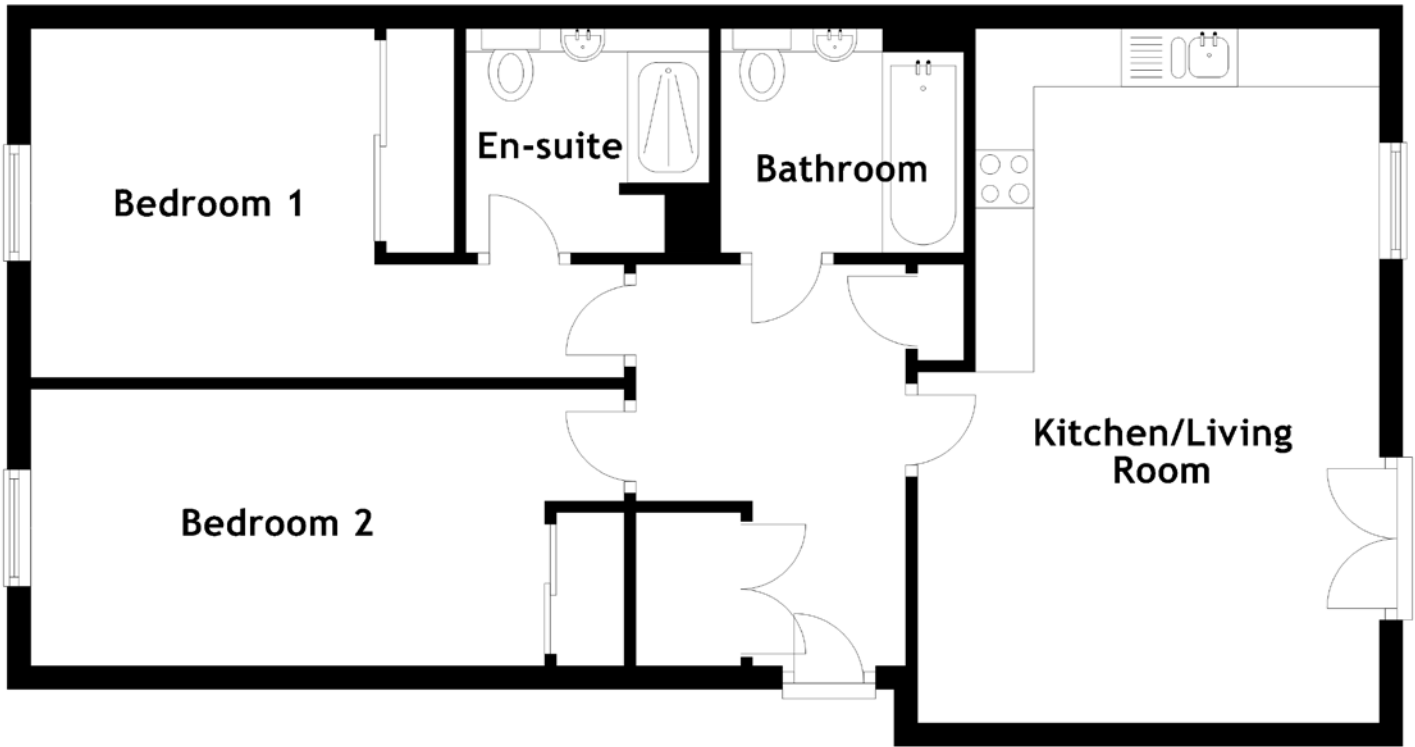


FLOOR PLAN, DIMENSIONS & MAP



Approximate Dimensions (Taken from the widest point)

Kitchen/Living Room 5.97m (19'7") x 3.97m (13')
 Bathroom 2.09m (6'10") x 1.93m (6'4")
 Bedroom 1 5.10m (16'9") x 3.00m (9'10")

En-suite
 Bedroom 2

2.09m (6'10") x 1.93m (6'4")
 5.10m (16'9") x 2.38m (7'10")

Gross internal floor area (m²): 68m²
 EPC Rating: B

