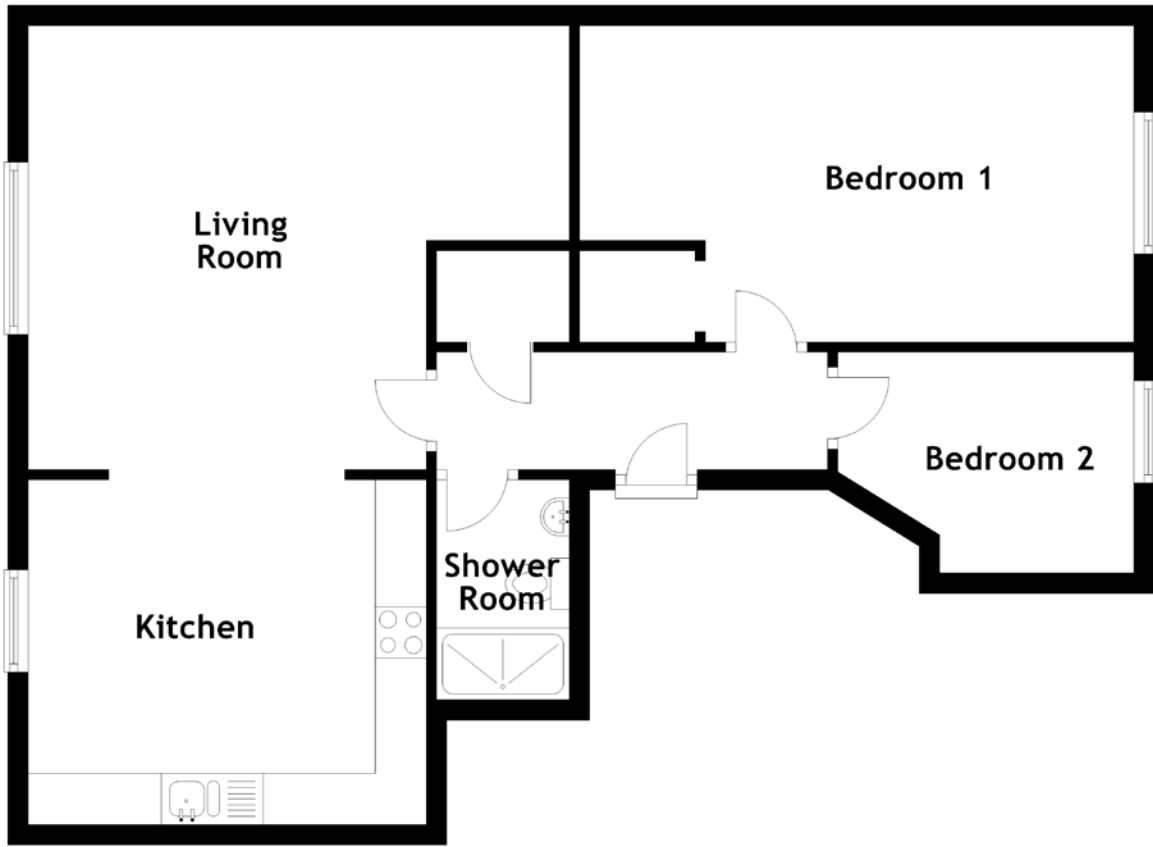


FLOOR PLAN, DIMENSIONS & MAP



Approximate Dimensions (Taken from the widest point)

Living Room 5.30m (17'5") x 4.34m (14'3")
 Kitchen 3.81m (12'6") x 3.37m (11'1")
 Shower Room 2.15m (7'1") x 1.30m (4'3")

Bedroom 1 5.43m (17'10") x 3.10m (10'2")
 Bedroom 2 2.90m (9'6") x 2.16m (7'1")

Gross internal floor area (m²): 68m²
 EPC Rating: D

