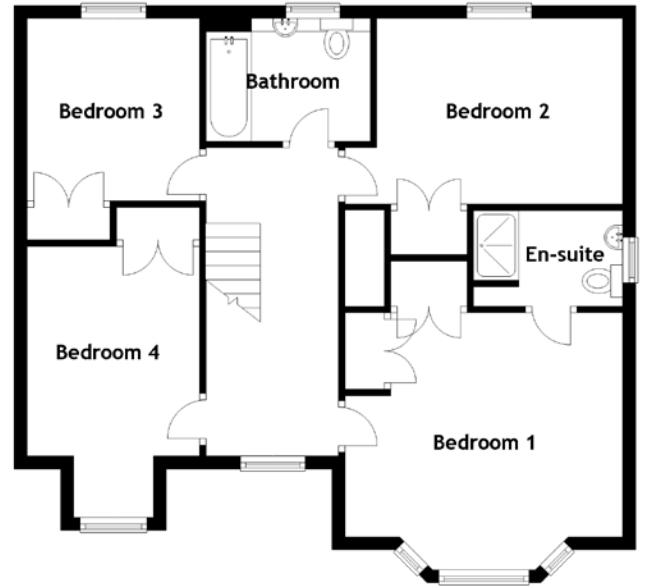
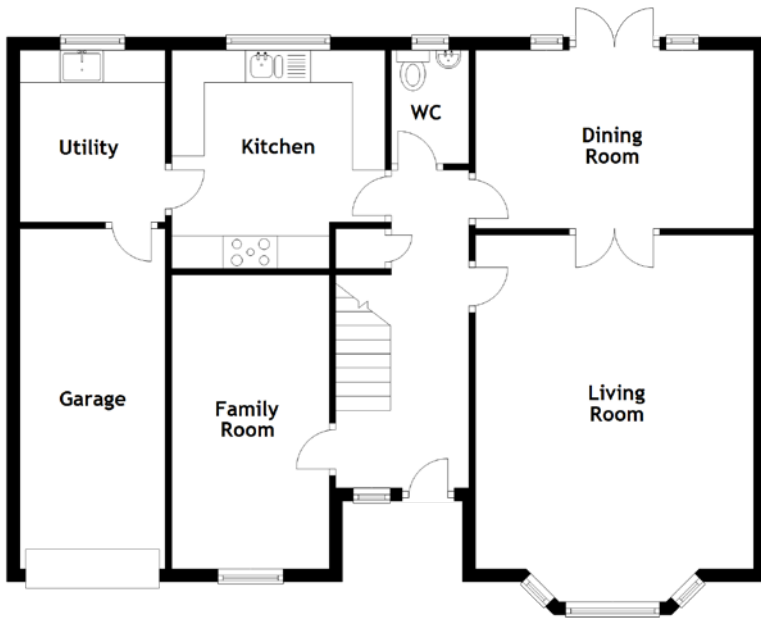


FLOOR PLAN, DIMENSIONS & MAP



Approximate Dimensions
(Taken from the widest point)

Living Room	5.65m (18'6") x 4.00m (13'2")
Dining Room	4.28m (14'1") x 2.75m (9')
Kitchen	3.47m (11'5") x 3.36m (11')
WC	1.75m (5'9") x 1.19m (3'11")
Family Room	4.66m (15'3") x 2.42m (7'11")
Utility	2.65m (8'8") x 2.24m (7'4")

Bathroom	2.53m (8'4") x 1.89m (6'2")
Bedroom 1	4.99m (16'5") x 3.96m (13')
En-suite	2.30m (7'7") x 1.47m (4'10")
Bedroom 2	4.28m (14'1") x 2.86m (9'5")
Bedroom 3	2.81m (9'3") x 2.66m (8'9")
Bedroom 4	3.23m (10'7") x 2.66m (8'9")
Garage	5.26m (17'3") x 2.24m (7'4")

Gross internal floor area (m²): 156m² | EPC Rating: C

