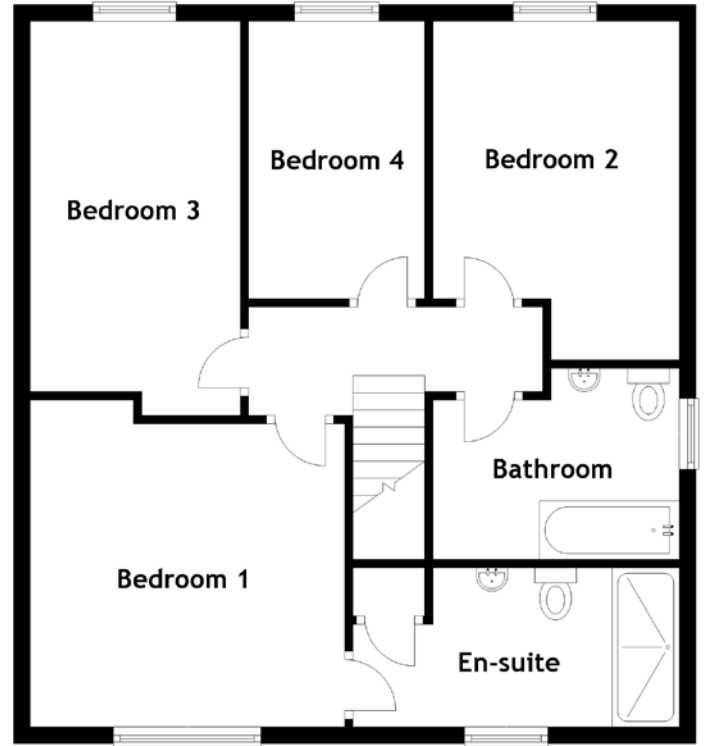
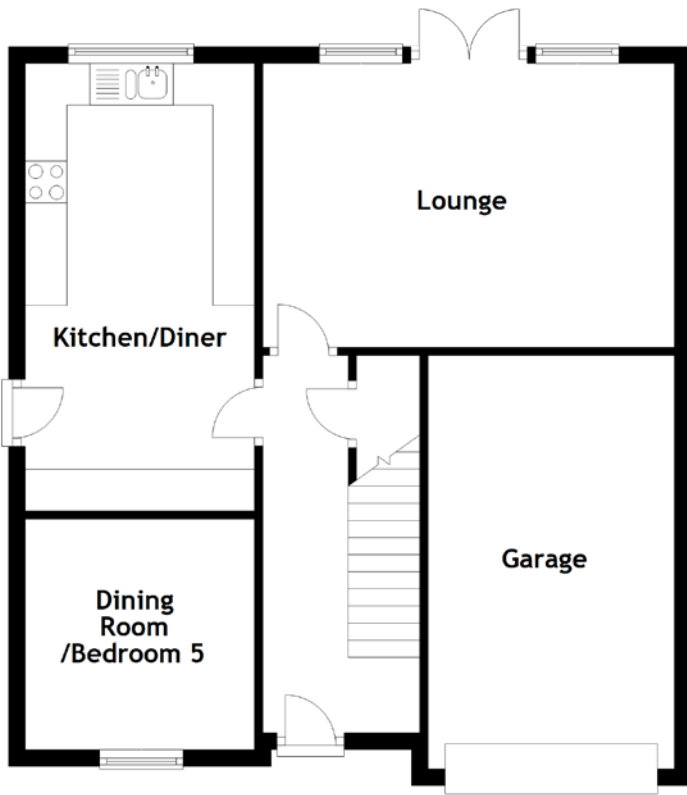


# FLOOR PLAN, DIMENSIONS & MAP



Approximate Dimensions (Taken from the widest point)

Lounge	4.93m (16'2") x 3.40m (11'2")
Kitchen/Diner	5.36m (17'7") x 2.75m (9')
Dining Room/Bedroom 5	2.76m (9'1") x 2.75m (9')
Bedroom 1	3.95m (13') x 3.85m (12'8")
En-suite	3.77m (12'4") x 1.91m (6'3")
Bedroom 2	4.05m (13'4") x 2.90m (9'6")
Bedroom 3	4.44m (14'7") x 2.52m (8'3")

Bedroom 4	3.32m (10'11") x 2.20m (7'3")
Bathroom	2.67m (8'9") x 2.29m (7'6")
Garage	4.95m (16'3") x 2.95m (9'8")

Gross internal floor area (m<sup>2</sup>): 113m<sup>2</sup>  
EPC Rating: B

Extras: Carpets and floor coverings, light fixtures and fittings, curtains and blinds.

