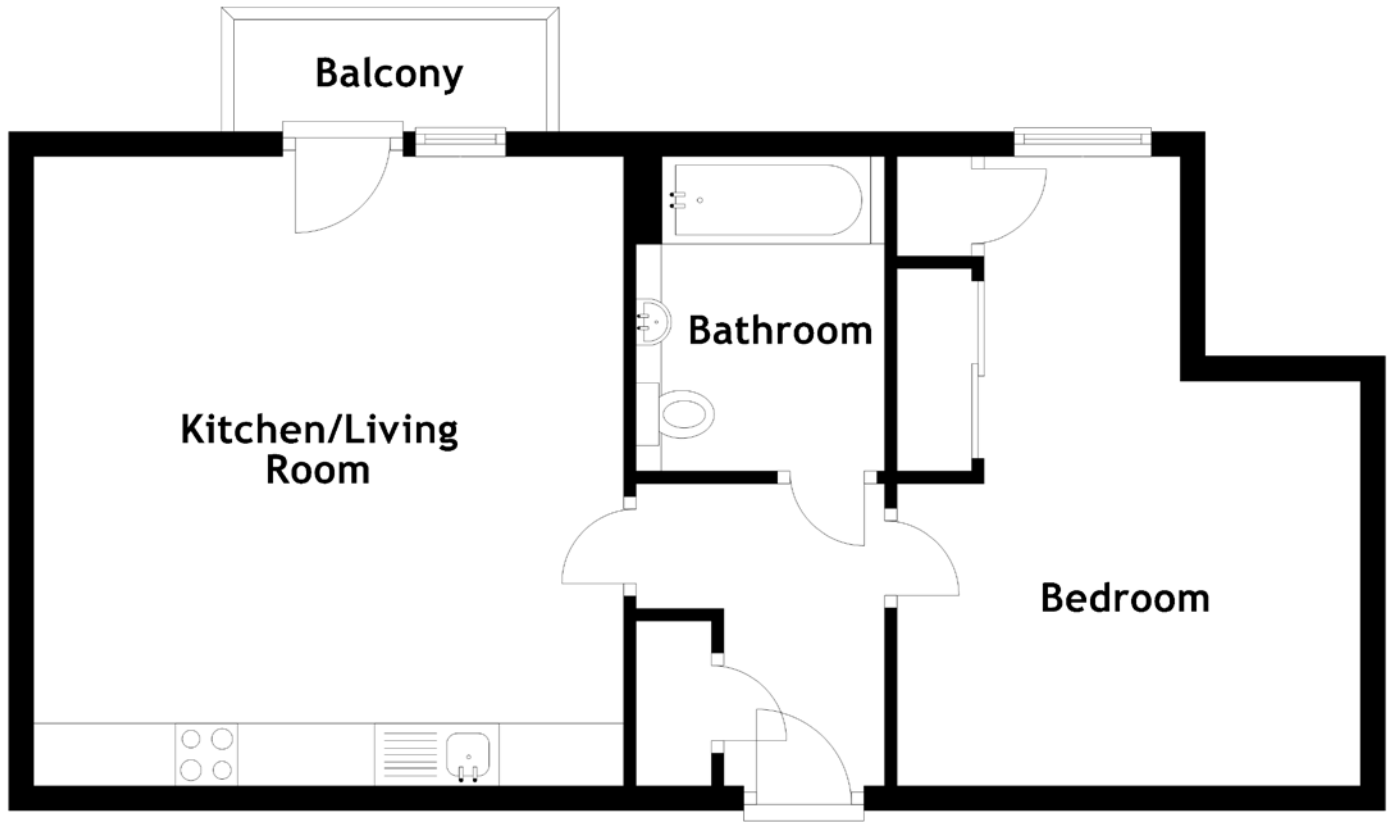


FLOOR PLAN, DIMENSIONS & MAP



Approximate Dimensions (Taken from the widest point)

Kitchen/Living Room 5.04m (16'6") x 4.73m (15'6")
Bathroom 2.52m (8'3") x 1.99m (6'6")
Bedroom 5.04m (16'6") x 3.72m (12'2")

Gross internal floor area (m²): 52m²
EPC Rating: B

