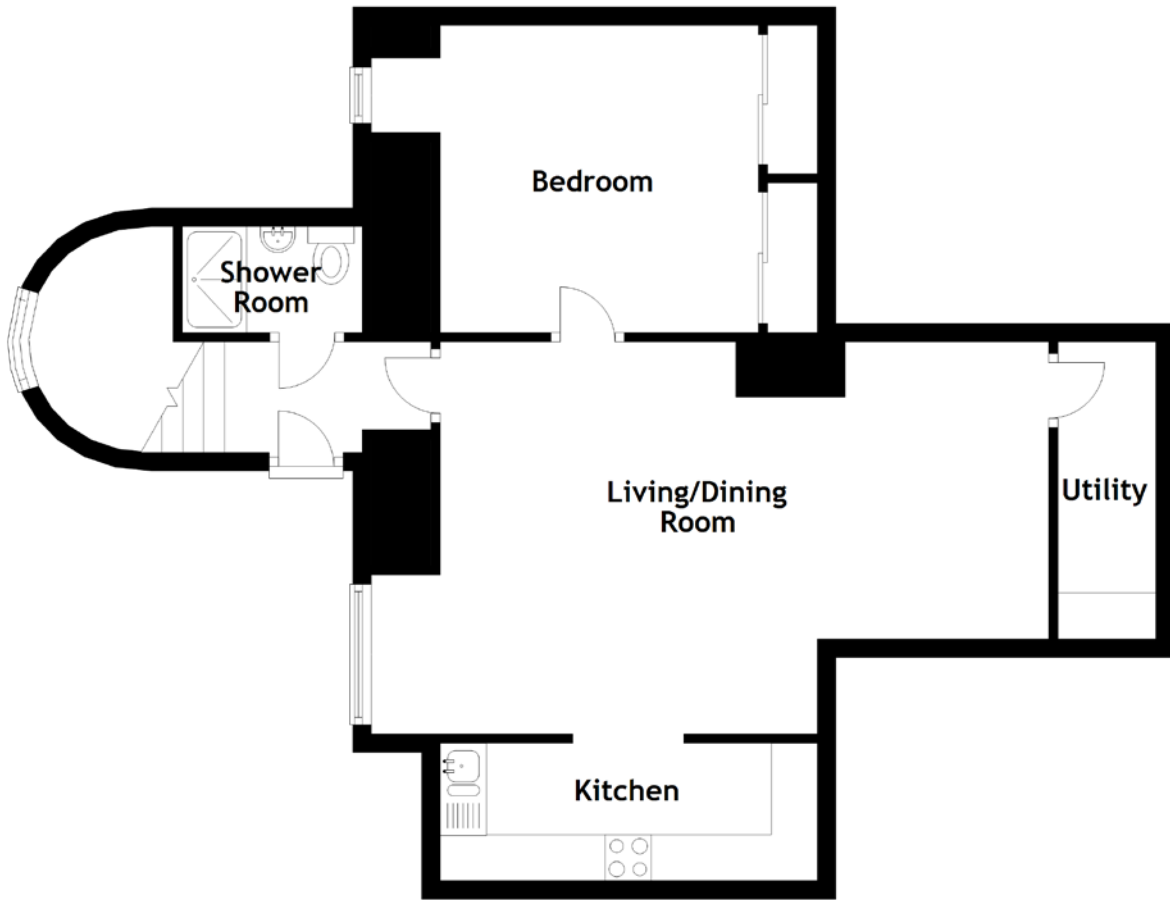


# FLOOR PLAN, DIMENSIONS & MAP



Approximate Dimensions (Taken from the widest point)

Living/Dining Room 6.60m (21'8") x 4.25m (13'11")  
 Kitchen 4.09m (13'5") x 1.49m (4'11")  
 Utility 3.22m (10'7") x 1.06m (3'6")

Bedroom  
 Shower Room

3.45m (11'4") x 3.33m (10'11")  
 1.95m (6'5") x 1.15m (3'9")

Gross internal floor area (m<sup>2</sup>): 55m<sup>2</sup>  
 EPC Rating: D

