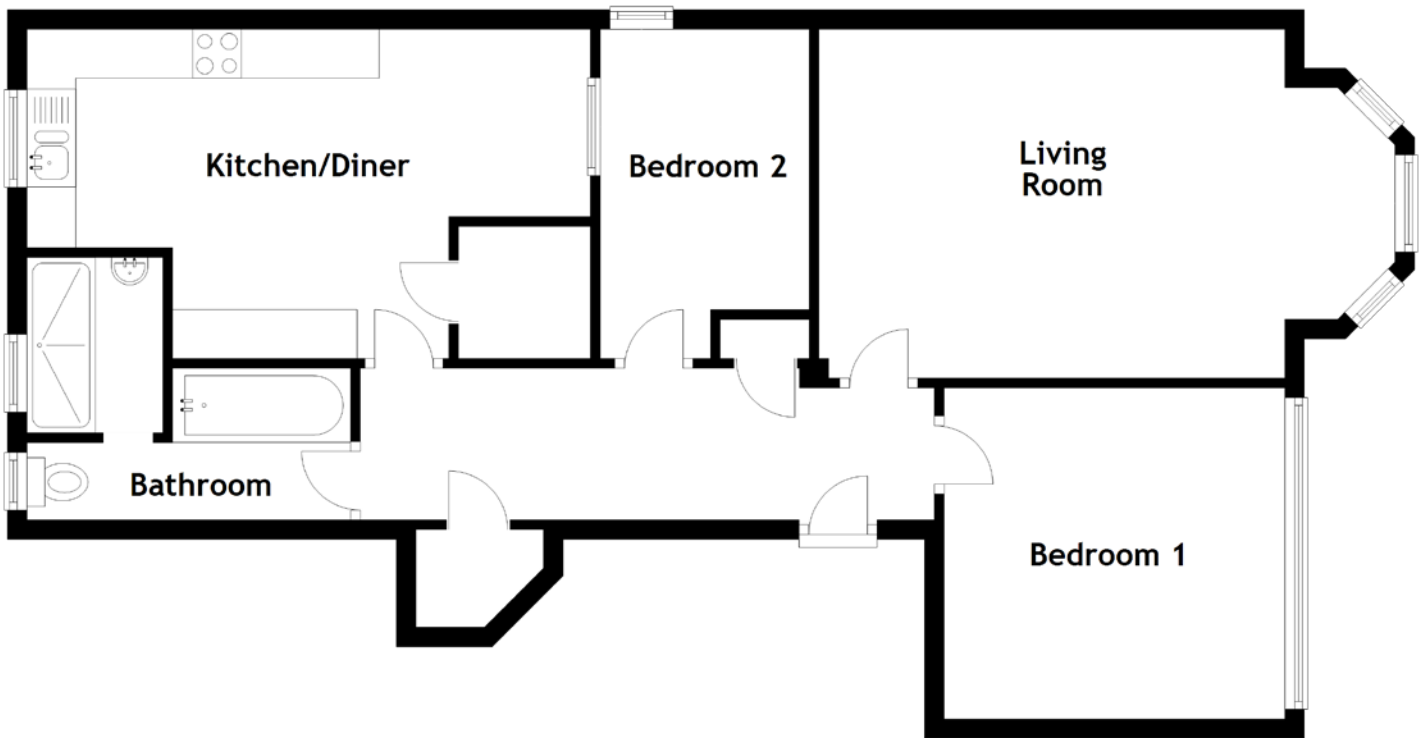


FLOOR PLAN, DIMENSIONS & MAP



Approximate Dimensions (Taken from the widest point)

Living Room 5.90m (19'4") x 3.57m (11'9")
 Kitchen/Diner 5.77m (18'11") x 3.37m (11'1")
 Bedroom 1 3.49m (11'5") x 3.39m (11'1")

Bedroom 2 3.37m (11'1") x 2.14m (7")
 Bathroom 3.31m (10'10") x 2.85m (9'4")

Gross internal floor area (m²): 75m²
 EPC Rating: D

