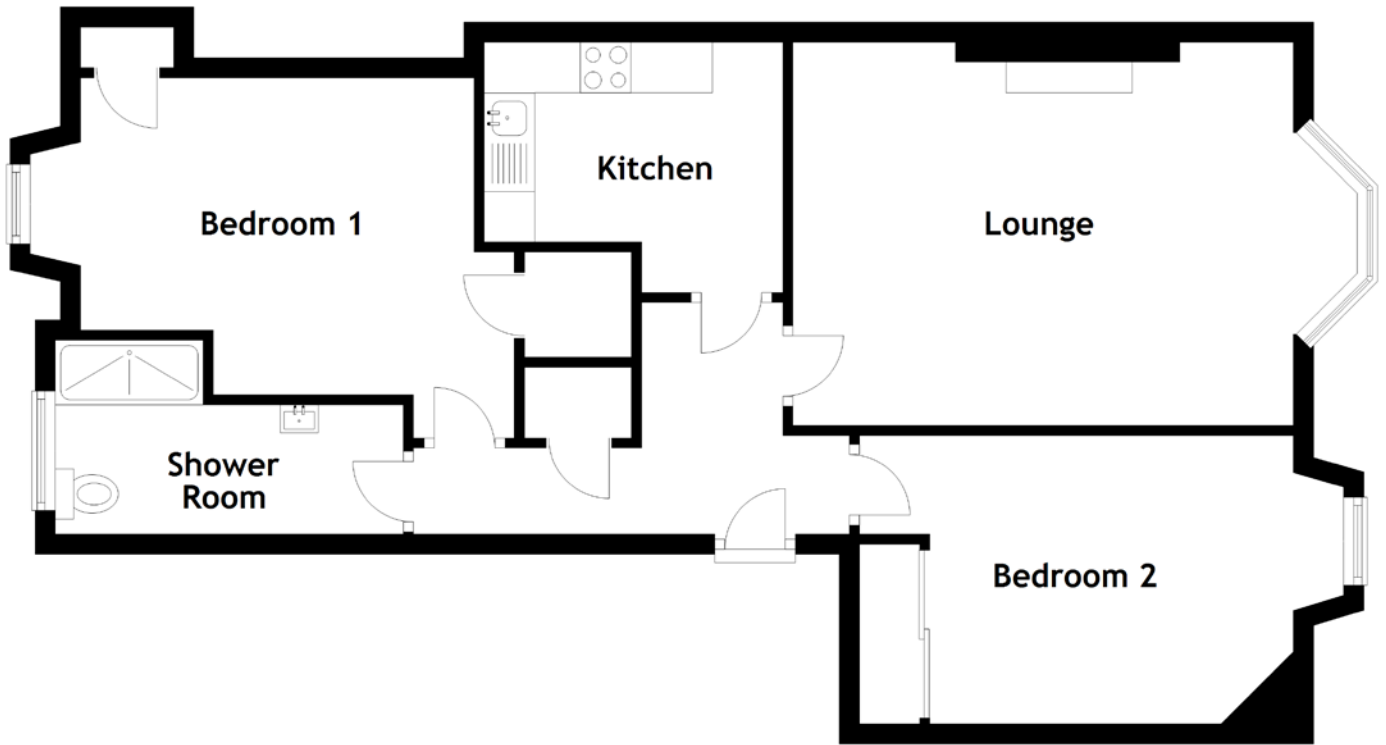


FLOOR PLAN, DIMENSIONS & MAP



Approximate Dimensions (Taken from the widest point)

Lounge 6.22m (20'5") x 3.80m (12'6")
 Kitchen 2.96m (9'9") x 2.48m (8'2")
 Shower Room 3.45m (11'4") x 1.92m (6'4")

Bedroom 1 4.30m (14'1") x 3.36m (11')
 Bedroom 2 4.30m (14'1") x 2.86m (9'5")

Gross internal floor area (m²): 72m²
 EPC Rating: D

