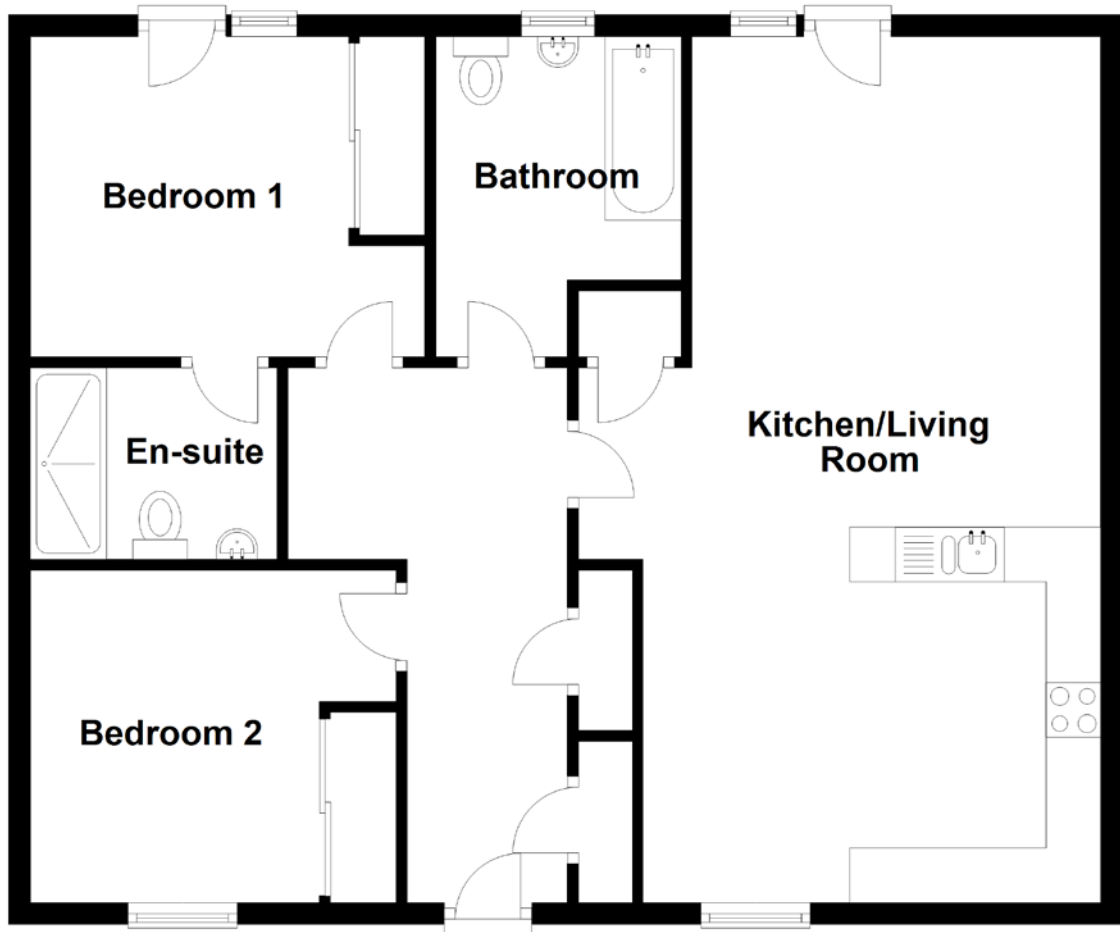


FLOOR PLAN, DIMENSIONS & MAP



Approximate Dimensions
(Taken from the widest point)

Bathroom 2.93m (9'7") x 2.25m (7'5")
Kitchen/Living Room 7.92m (26') x 4.18m (13'9")

Bedroom 1 3.61m (11'10") x 2.93m (9'7")
En-suite 2.26m (7'5") x 1.75m (5'9")
Bedroom 2 3.35m (11') x 3.04m (10')

Gross internal floor area (m²): 78m² | EPC Rating: B

