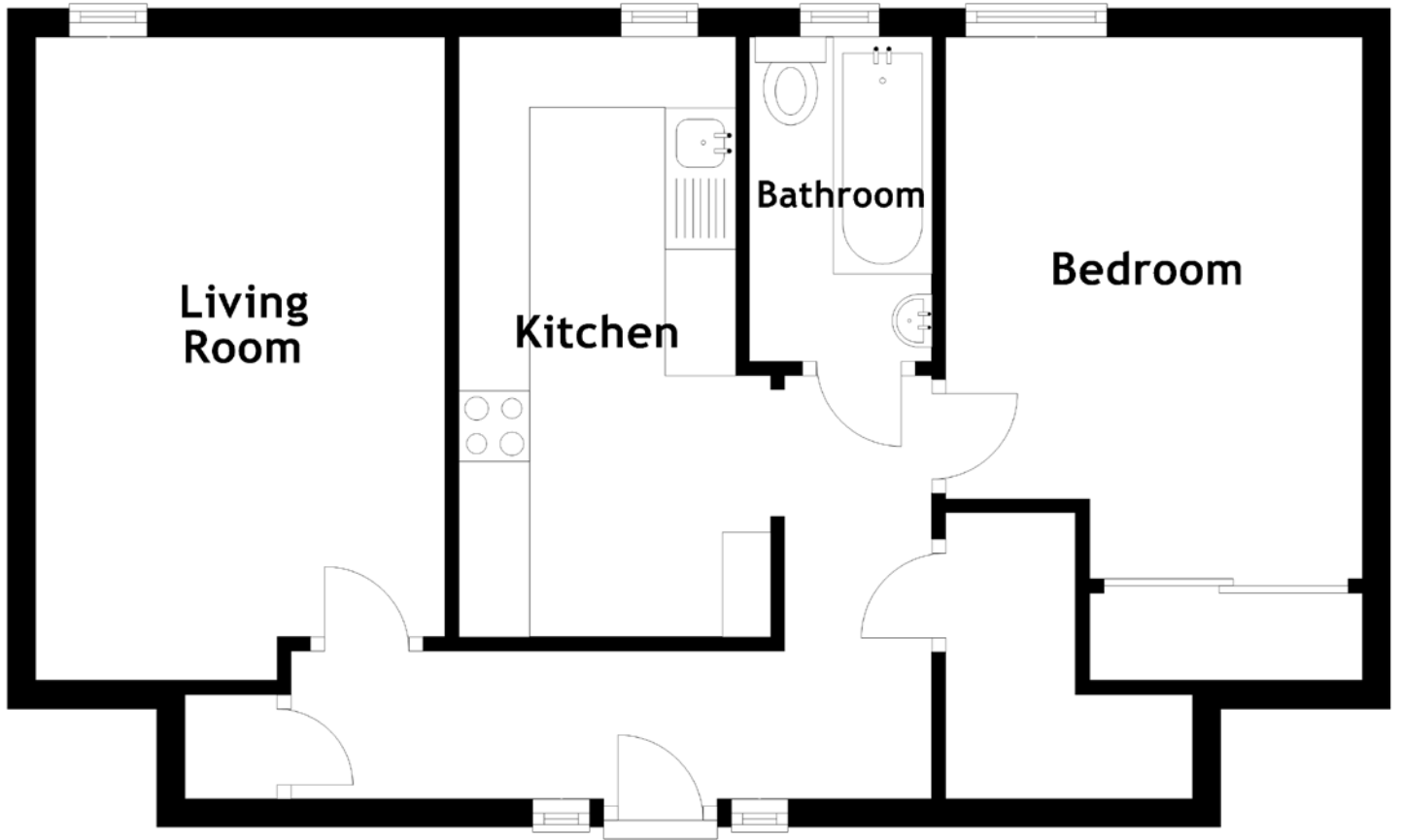


FLOOR PLAN, DIMENSIONS & MAP



Approximate Dimensions
(Taken from the widest point)

Living Room
Kitchen

4.56m (15') x 2.90m (9'6")
4.25m (13'11") x 1.96m (6'5")

Bathroom
Bedroom

2.30m (7'7") x 1.29m (4'3")
3.84m (12'7") x 2.95m (9'8")

Gross internal floor area (m²): 51m²
EPC Rating: C

