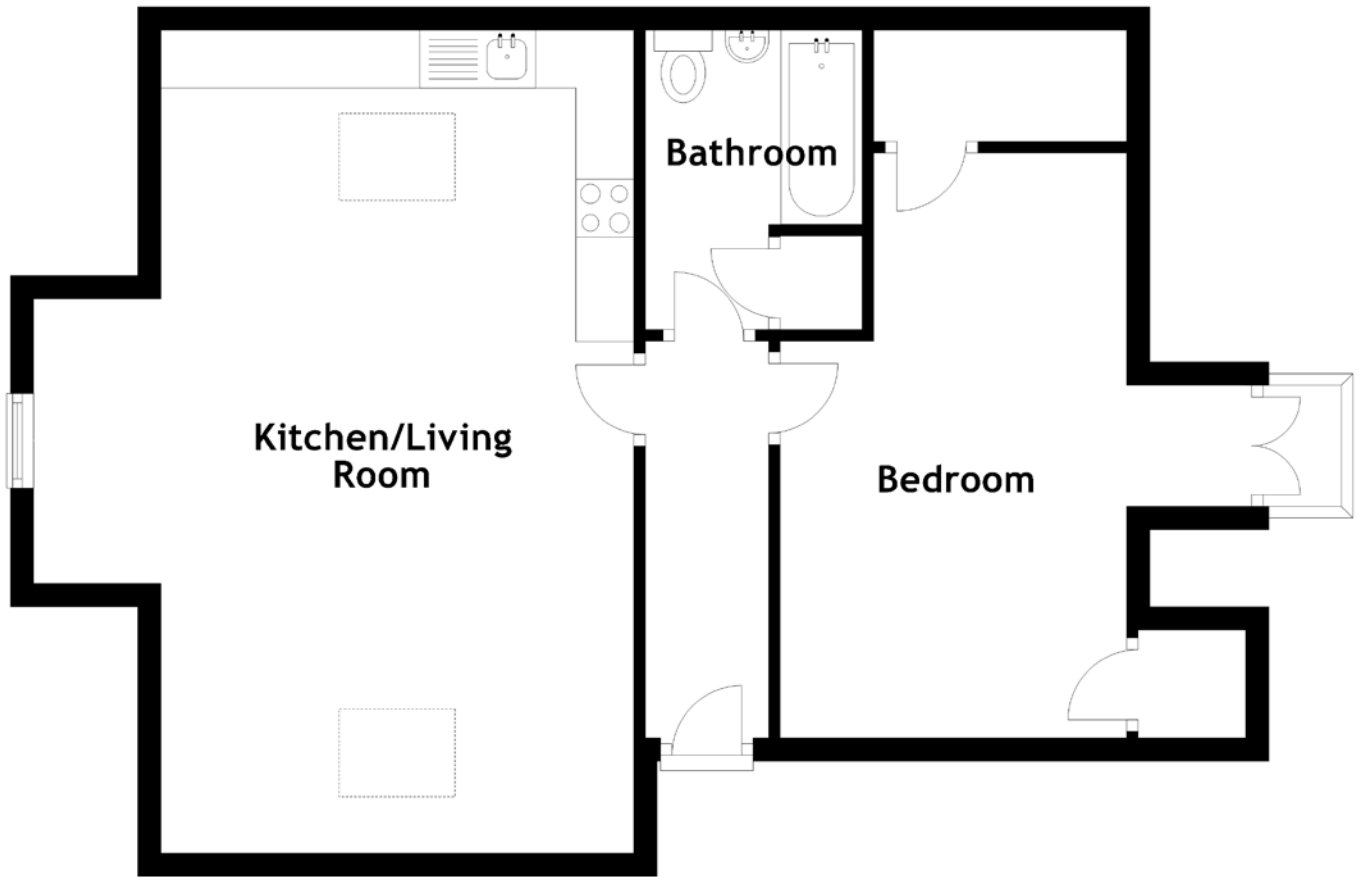


# FLOOR PLAN, DIMENSIONS & MAP



Approximate Dimensions (Taken from the widest point)

Kitchen/Living Room 7.09m (23'3") x 5.18m (17')  
Bathroom 2.58m (8'6") x 1.87m (6'2")

Bedroom

5.04m (16'6") x 2.99m (9'10")

Gross internal floor area (m<sup>2</sup>): 52m<sup>2</sup>  
EPC Rating: F

